

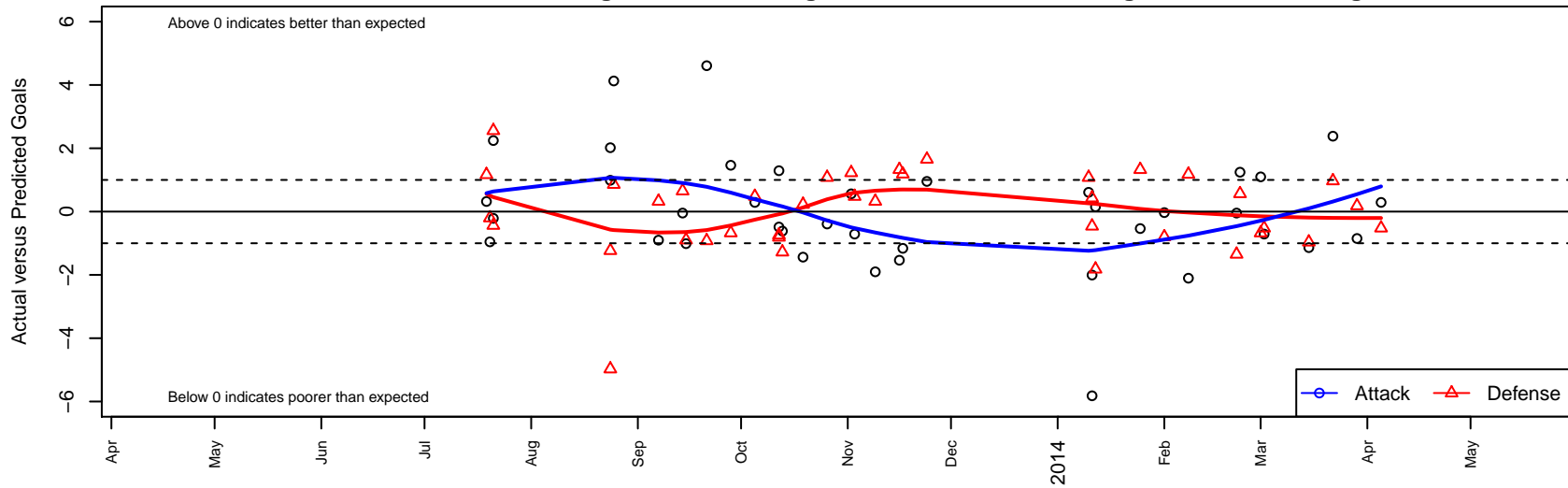
Crossfire Premier B B02

Crossfire Premier SC
 Redmond, WA
 B02 total strength=656
 attack=0.66 defense=0.56
 fall league = RCL B02 Div 2, Spr RCL B02 Div :
 notes= Storkson 2013
 alt names used:
 CROSSFIRE PREMIER BU-11 "B" STORKSO
 Crossfire Premier B02 B
 Crossfire Premier B02-Storkson-B
 Crossfire Premier BU11B, Storkson

Venues played:
 Nike Crossfire Challenge Gold 9v9 U11
 NW Champions League U11
 RCL B02 Div 2
 PacNW Winter Classic Premier II U11
 Spr RCL B02 Div 2
 Challenge Cup B02 Division 2 – Challenge 2



Crossfire Premier B B02
 Dots are actual minus expected GF (blue circles) and GA (red triangles).
 Blue line is smoothed change in attack strength. Red is smoothed change in defense strength.



| | date | home | | away | | venue | pred.home | pred.away |
|-------|-------------|--------------------------|---|----------------------------|---|--|------------------|------------------|
| 25591 | 2014-04-05 | Seattle United Tango B02 | 2 | Crossfire Premier B B02 | 1 | Challenge Cup B02 Division 2 – Challenge 2 | 1.48 | 0.71 |
| 25421 | 2014-03-29 | Crossfire Premier B B02 | 1 | Crossfire Premier C B02 | 1 | Challenge Cup B02 Division 2 – Challenge 2 | 1.85 | 1.18 |
| 25134 | 2014-03-22 | Kent United Green B02 | 0 | Crossfire Premier B B02 | 6 | Challenge Cup B02 Division 2 – Challenge 2 | 0.97 | 3.62 |
| 24531 | 2014-03-15 | Crossfire Premier B B02 | 1 | FC Alliance B B02 | 2 | Challenge Cup B02 Division 2 – Challenge 2 | 2.14 | 1.04 |
| 23675 | 2014-03-02 | Crossfire Premier B B02 | 0 | Seattle United Tango B02 | 2 | Spr RCL B02 Div 2 | 0.71 | 1.48 |
| 23422 | 2014-03-01 | FWFC Blue B02 | 2 | Crossfire Premier B B02 | 3 | Spr RCL B02 Div 2 | 1.33 | 1.90 |
| 23195 | 2014-02-23 | Crossfire Premier B B02 | 3 | Snohomish United Black B02 | 1 | Spr RCL B02 Div 2 | 1.76 | 1.56 |
| 22924 | 2014-02-22 | Crossfire Premier B B02 | 1 | WPFC White B02 | 3 | Spr RCL B02 Div 2 | 1.05 | 1.65 |
| 22264 | 2014-02-08 | Crossfire Premier B B02 | 0 | PacNW Blue B02 | 0 | Spr RCL B02 Div 2 | 2.10 | 1.18 |
| 21981 | 2014-02-01 | Seattle United Copa B03 | 3 | Crossfire Premier B B02 | 1 | Spr RCL B02 Div 2 | 2.20 | 1.03 |
| 21700 | 2014-01-25 | Eastside FC White B02 | 0 | Crossfire Premier B B02 | 1 | Spr RCL B02 Div 2 | 1.33 | 1.54 |
| 21192 | 2014-01-12 | Crossfire Premier C B02 | 3 | Crossfire Premier B B02 | 2 | PacNW Winter Classic Premier II U11 | 1.18 | 1.85 |
| 21086 | 2014-01-11 | WA Rush Nero B02 | 0 | Crossfire Premier B B02 | 1 | PacNW Winter Classic Premier II U11 | 0.43 | 3.01 |
| 21092 | 2014-01-11 | Crossfire Premier B B02 | 0 | PacNW Maroon B03 | 1 | PacNW Winter Classic Premier II U11 | 5.82 | 0.54 |
| 21039 | 2014-01-10 | Crossfire Premier B B02 | 3 | Harbor Premier Green B02 | 0 | PacNW Winter Classic Premier II U11 | 2.39 | 1.08 |
| 19298 | 2013-11-24 | Crossfire Premier B B02 | 2 | WPFC White B02 | 0 | RCL B02 Div 2 | 1.05 | 1.65 |
| 18731 | 2013-11-17 | Crossfire Premier B B02 | 0 | 3 Rivers Black B02 | 1 | RCL B02 Div 2 | 1.16 | 2.19 |
| 18378 | 2013-11-16 | Eastside FC White B02 | 0 | Crossfire Premier B B02 | 0 | RCL B02 Div 2 | 1.33 | 1.54 |
| 17626 | 2013-11-09 | FWFC Blue B02 | 1 | Crossfire Premier B B02 | 0 | RCL B02 Div 2 | 1.33 | 1.90 |
| 17162 | 2013-11-03 | Crossfire Premier B B02 | 0 | Seattle United Tango B02 | 1 | RCL B02 Div 2 | 0.71 | 1.48 |
| 16623 | 2013-11-02 | Crossfire Premier B B02 | 2 | NWN Red B02 | 1 | RCL B02 Div 2 | 1.44 | 2.23 |
| 15741 | 2013-10-26 | Harbor Premier Green B02 | 0 | Crossfire Premier B B02 | 2 | RCL B02 Div 2 | 1.08 | 2.39 |
| 14809 | 2013-10-19 | NWN Red B02 | 2 | Crossfire Premier B B02 | 0 | RCL B02 Div 2 | 2.23 | 1.44 |
| 14258 | 2013-10-13 | Crossfire Premier B B02 | 0 | Westside Timbers Copa B02 | 4 | NW Champions League U11 | 0.62 | 2.72 |
| 13698 | 2013-10-12 | Crossfire Premier B B02 | 0 | Eastside Timbers Red B02 | 4 | NW Champions League U11 | 0.49 | 3.19 |
| 13705 | 2013-10-12 | Crossfire Premier B B02 | 2 | Washington Timbers Red B02 | 3 | NW Champions League U11 | 0.71 | 2.26 |
| 12719 | 2013-10-05 | Seattle United Tango B02 | 1 | Crossfire Premier B B02 | 1 | RCL B02 Div 2 | 1.48 | 0.71 |
| 11814 | 2013-09-28 | Crossfire Premier B B02 | 3 | Eastside FC White B02 | 2 | RCL B02 Div 2 | 1.54 | 1.33 |

| | date | home | | away | | venue | pred.home | pred.away |
|-------|-------------|---------------------------------|---|--------------------------|---|---------------------------------------|------------------|------------------|
| 10836 | 2013-09-21 | Crossfire Premier B B02 | 7 | Harbor Premier Green B02 | 2 | RCL B02 Div 2 | 2.39 | 1.08 |
| 10383 | 2013-09-15 | Slammers Orange B02 | 2 | Crossfire Premier B B02 | 1 | RCL B02 Div 2 | 1.10 | 2.01 |
| 9867 | 2013-09-14 | WPFC White B02 | 1 | Crossfire Premier B B02 | 1 | RCL B02 Div 2 | 1.65 | 1.05 |
| 8926 | 2013-09-07 | Crossfire Premier B B02 | 1 | FWFC Blue B02 | 1 | RCL B02 Div 2 | 1.90 | 1.33 |
| 8299 | 2013-08-25 | FC Nova SuperNova Black B02 | 0 | Crossfire Premier B B02 | 8 | NW Champions League U11 | 0.86 | 3.87 |
| 7868 | 2013-08-24 | WAFC Real Madrid B02 | 7 | Crossfire Premier B B02 | 3 | NW Champions League U11 | 2.03 | 2.01 |
| 7874 | 2013-08-24 | Coquitlam Metro Ford Ajax 2003B | 3 | Crossfire Premier B B02 | 4 | NW Champions League U11 | 1.77 | 1.98 |
| 4136 | 2013-07-21 | PacNW Maroon B02 | 0 | Crossfire Premier B B02 | 1 | Nike Crossfire Challenge Gold 9v9 U11 | 2.56 | 1.21 |
| 4138 | 2013-07-21 | Snohomish United Black B02 | 2 | Crossfire Premier B B02 | 4 | Nike Crossfire Challenge Gold 9v9 U11 | 1.56 | 1.76 |
| 3652 | 2013-07-20 | Eastside FC Red B02 | 3 | Crossfire Premier B B02 | 0 | Nike Crossfire Challenge Gold 9v9 U11 | 2.80 | 0.96 |
| 3408 | 2013-07-19 | WPFC Black B02 | 2 | Crossfire Premier B B02 | 1 | Nike Crossfire Challenge Gold 9v9 U11 | 3.17 | 0.68 |